

Memorial Medical Plaza

14001 McAuley Boulevard Oklahoma City, OK 73134



OFFICE SPACE NOW AVAILABLE

Available SF:	Suite 230: +/-2,122 RSF Suite 240: +/-1,238 RSF (+/-3,360 RSF total contiguous)
Lease Rate:	\$22.00 rsf average Full Service
Building Size/Type:	18,336 SF Office and Medical
Building Class:	A
Year Built:	2007
Cross Streets:	Quailbrook Drive & West Memorial Road

COMMENTS

Memorial Medical Plaza is a two story office/medical building appealing to any office or medical user due to the highly traveled Memorial Corridor and proximity to Mercy Hospital. Tenant mix includes Herman Meinders Investments, Advanced Aesthetics - Plastic Surgeon, Stinnett Associates- Accountants, Oxygen Outlet, and Orban Oil and Gas.

FOR MORE INFORMATION, CONTACT

Tom Fields
tfields@priceedwards.com
405.239.1205

Craig Tucker
ctucker@priceedwards.com
405.843.7474

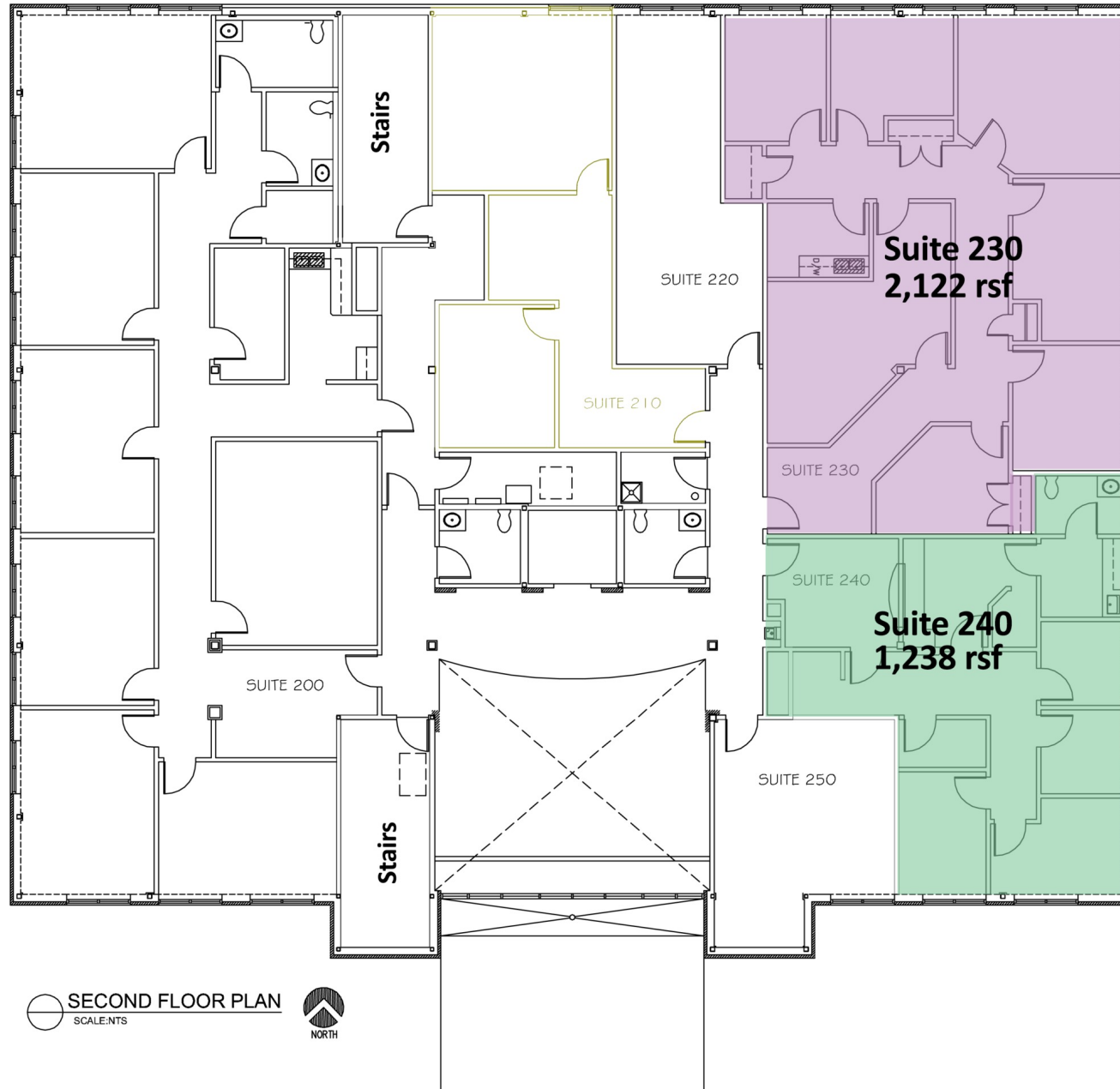
210 Park Ave, Suite 700

Oklahoma City, OK 73102

www.priceedwards.com

Memorial Medical Plaza

14001 McAuley Boulevard, Oklahoma City, OK 73134



The information above has been obtained from sources believed reliable. While we do not doubt its accuracy, we have not verified it and make no guarantee, warranty, or representation about it. You and your legal and technical advisors should conduct a careful, independent investigation of the property to determine to your satisfaction to the suitability of the property for your needs.